



our first house - 4/02

MORGAN - All As...

New Employee Day - March

# Empowering PEOPLE Changing LIVES

# LOUISVILLE URBAN LEAGUE

*Opportunity + Equality = One Community*

## IMPACT

We served 8,900 people directly in fiscal 2004, and through extended collaboration with our partners, benefited more than 17,000 people.

## MISSION

As an active partner, leader and catalyst we will assist African Americans, other minority groups and the disadvantaged attain social and economic equality and stability through direct services and advocacy.

## HISTORY

The Louisville Urban League is a nonprofit, nonpartisan, interracial community service organization dedicated to the elimination of racism and its effects within our community. In 1920, only 10 years after the founding of what was to become the National Urban League, the Louisville Urban League emerged and became a member agency of the Community Chest. It was incorporated in August 1921 and was initially known as The Urban League of Louisville for Social Service Among Negroes and as The Louisville Branch of the National Urban League. Elwood Street, serving as temporary Chairman, appointed a five-person committee to create the framework for a local Urban League. The first Executive Secretary was appointed and the work of the Louisville Urban League began.

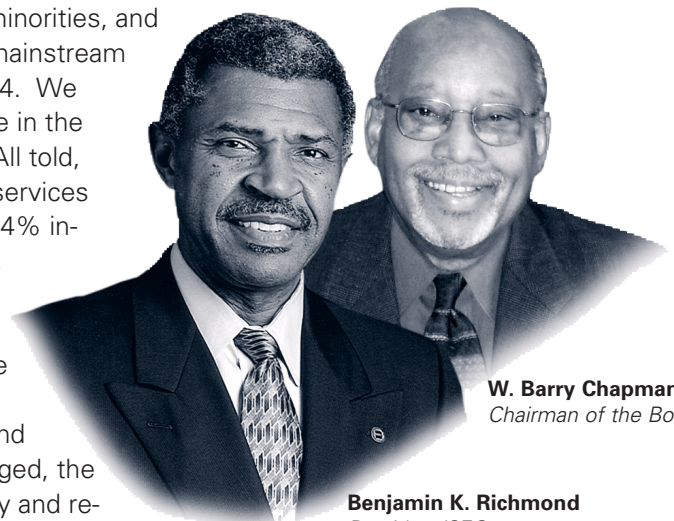
# MESSAGE FROM THE PRESIDENT AND CHAIRMAN

The critical work of empowering African Americans, other minorities, and the disadvantaged for meaningful participation in the American mainstream continued unabated by the Louisville Urban League in FY 2003-04. We have seen positive, lasting differences the organization has made in the lives of numerous people throughout the Louisville community. All told, during the past year, through collaborations/partnerships, direct services and special Expo activities, we touched over 17,000 families, a 44% increase over the prior year. People came looking for employment, seeking better housing, to buy a home, to get academic help and learn how to be a good citizen and to seek help with civic engagement. This for us is a strong indicator that the work of the League is as important now as it has ever been.

Determined and charged with a mission to achieve equity and parity for African Americans, other minorities and the disadvantaged, the League has been at the vanguard of positive change in our city and region since 1921. Through sustained efforts in the critical areas of education, workforce development, housing and health awareness, African Americans in Louisville have made tangible progress in moving closer toward educational, political and economic equality. As is supported by our constituents, partners, funders and members, the Louisville Urban League has been a critical cog in moving the wheel forward to a brighter future.

While some important battles have been won, the war on inequality has presented and continues to present formidable challenges to the League - and other organizations of its kind. During the past year, the League remained committed to bringing people into the economic mainstream in spite of a lackluster economy, a significant drop in financial support of non-profit organizations and diminished resources to aid the urban poor.

Our initiatives, special events and partnerships designed to help our constituents were made possible by a host of people and organizations that believe in the importance of working for a more open and just society. While we do not view our mission through rose-colored lenses, rest assured that as the crusade continues to improve lives and create opportunity, so too, does the resolve of the League's Board of Directors, executive office, management team, staff and auxiliaries. Together we will continue to speak for the voiceless, advocate for the powerless and work to create employment opportunities for the jobless. That is our mission. That is our commitment. That is our promise.



**W. Barry Chapman**  
Chairman of the Board

**Benjamin K. Richmond**  
President/CEO

## 2003 - 2004 LOUISVILLE URBAN LEAGUE BOARD OF DIRECTORS

**Chapman, W. Barry \***  
Chairman

**Conway, Charnley \***  
Vice Chairman For Programs

**Barker, J. Barry \***  
Vice Chairman For Administration

**Klein, David \***  
Vice Chairman For Development

**Hancock, Chip \***  
Treasurer

**Helton, Audwin \***  
Secretary

**Farmer, Ed \***  
Member-at-Large

**Merrweather, Dr. Freda \***  
Member-at-Large

**Norton, Jeffrey \***  
Member-at-Large

**Tate, Vivian \***  
Member-at-Large

**Caples, Elizabeth \***  
Guild President

**Beckett, James H.**

**Black, Bonita K.**

**Cunagin, Teresa S.**

**Gimmel, Jr. Richard F.**

**Guess, Chet K.**

**Hale, David J.**

**Hayden, Aubrey L., Jr.**

**Howell, Douglas H.**

**James, Wilbert, Jr.**

**Kokai, Tom**

**Ledford, Dr. Sandra A.**

**McCormick, Mary**

**McDonald-Hackett, Angie**

**Miller, Tony**

**Mitchell, Bill**

**Moses, Dr. Alex J.**

**Rafferty, Hollye**

**Robbins, Jeffrey**

**Scott, Sharon K.**

**Siemens, George R., Jr.**

**Summers, William E., V**

**Taylor-Archer, Mordean**

**Turley, Teresa**

## PARTNERS & COLLABORATORS

Bellarmine University  
Better Business Bureau  
Big Brothers/Big Sisters of Kentuckiana  
C.A.R.E., Kentucky  
Canaan Community Development Corporation  
Career Resources, Inc.  
Caritas Health Services  
Center for Women & Families  
Chestnut Street YMCA  
City of New Albany, IN  
Coalition for the Homeless  
Community Action Agency of Southern Indiana  
Community Partnership for the Protection of Children  
Fannie Mae Kentucky Partnership  
Federal Reserve Bank of St. Louis  
Freddie Mac Corporation  
Greater Salem Missionary Baptist Church  
Green Street Baptist Church  
Habitat for Humanity, Louisville  
Home of the Innocents  
Housing Authority of Jeffersonville, Indiana  
Jefferson Community & Technical College  
Job News  
Kentucky Commission on Human Rights  
Legal Aid Society  
Lincoln Foundation  
Louisville Asset Building Coalition  
Louisville Central Community Centers  
Louisville Education and Employment Partnership  
Louisville Metro Community Action Partnership  
Louisville Metro Health Department  
Louisville Metro Housing and Community Development

Louisville Metro Housing Authority  
Louisville Metro Human Relations Commission  
Louisville Metro Office of Youth Development  
Louisville Real Estate Brokers Association  
Louisville Real Estate Development Company  
Metro Human Needs Alliance  
Metro Parks  
Metropolitan Housing Coalition  
Mid-Kentucky Presbytery  
Muhammad Ali Center  
National Association of Black Accountants  
National Eye Institute  
Neighborhood Place  
New Direction Housing Corporation  
PGA Kentucky Section  
Project Warm  
REMAX and Associates  
Shawnee Golf Course  
SOCAR Management  
The Chamber of Jeffersontown  
The City of Jeffersontown  
The Housing Partnership, Inc.  
U.S. Department of HUD  
University of Louisville  
WAVE3  
WDRB Fox41  
Wesley House  
WHAS11  
WLKY News Channel 32  
Youth Alive, Inc.  
Youth Enhancement Services  
YouthBuild Louisville

\* Executive Committee

# CENTER FOR WORKFORCE DEVELOPMENT

The League's Center for Workforce Development provides job search assistance and placement services to over 4,400 persons annually. The services and activities help to empower people to overcome their barriers to success and economic self sufficiency. The League also works with business and industry to recruit, screen, and refer a diverse group of qualified candidates to meet the workforce needs of local employers. The primary objective of the Center for Workforce Development is to meet the

demands of employers and to link individuals to meaningful employment.

## RESULTS

### Workforce Development

#### Job Search Assistance

- **1,992** Individuals accessed job search resources
- **371** Individuals prepared resumes

#### Skills Training

- **82** Individuals trained in interviewing, proper attire, goal setting, customer service

#### Job Referrals

- **219** Individuals were referred for employment

#### Job Placements

- **86%** referrals filled full time and/or part time positions

#### Income

- Individuals earn between **\$16,000 - \$22,000** average annual incomes

#### Employer Service

- Over **945** Employers received recruitment and/or referral services
- Employers received a diverse pool of minority applicants to meet Affirmative Action goals
- **95%** Employers satisfied

#### Career Expos

- **4,217** Individuals linked to employment opportunities with **143** Employers



## LOUISVILLE YOUTH OPPORTUNITY NETWORK (LYON)



Now in its fifth and final year of a five-year demonstration grant, much progress has been made and many success stories have been recorded.

The Louisville Youth Opportunity Network has empowered over two-thirds (4,141) of the 14-21 year olds in Louisville's Empowerment Zone. Countless lives have been changed because LYON meets the youth where they are and helps them develop a plan for where they want to be. For most of these young people, they have taken a significant step toward a successful life – going back to school, advancing in school, training to get a job, addressing other personal barriers to success.

Many of the good things that have happened through the program's efforts cannot be easily measured or quantified, but there are many accomplishments to

report. As the demonstration grant ends, the program has documented success in educational attainment, workforce development, and established youth networks for LYON participants.

## RESULTS (SINCE 2000)

### Educational Attainment

- **745** high school diplomas
- **131** GEDs
- **11** completed junior or community college
- **9** earned 4-year college degree
- **13** completed vocational technical school

### Occupational Skills Training

- **28** completed Pre-Apprenticeship (ex: YouthBuild)
- **11** graduated Job Corps
- **13** completed Vocational Technical School

### Long Term Job Placement

- **683** employed

# HOUSING SERVICES & NEIGHBORHOOD REVITALIZATION



More than 1,500 metro Louisville families and individuals have been able to move up to better homes, improve their credit scores, prevent foreclosures, or become more active in their neighborhoods through the Louisville Urban League's Department of Housing Services and Neighborhood Revitalization. We provide services that empower families to become economically stable and build strong neighborhoods, through housing counseling, education and training.



## RESULTS

### Housing Services

- **1,582** Families received housing training and/or counseling services

### Home Ownership Training

- **115** Families purchased homes

### Default Mortgage Counseling

- **88** Families saved their homes from foreclosure

### Rental Readiness Training

- **171** Families entered lease agreements

### Budget & Credit Counseling

- **167** Individuals improved their credit scores

### Resource Referral Services

- **263** Individuals linked to community resources

### Home Ownership Expo

- **600** Families and individuals linked to 60 developers, realtors, banks, and/or home maintenance resources

### Neighborhood Revitalization/Resident Services

- Russell Resident Engagement (C.A.R.R.)
- C.A.R.R. incorporated and now operates independently

## YOUTH DEVELOPMENT & EDUCATION

The Youth Development and Education Department provides services and support to empower youth to achieve at high levels academically, personally and socially. **The NULITES program (National Urban League Incentives to Excel and Succeed)** is a leadership development program that works with local schools, businesses, and other organizations to help students and their parents get the most benefit out of their school years. Under NULITES the League provides a multitude of services producing results throughout the community.

## RESULTS

### YOUTH ACHIEVEMENT

- |                                 |  |
|---------------------------------|--|
| • <b>Youth Support</b>          | <b>447</b> School age youth received academic, social and emotional support  |
| • <b>Reading Programs</b>       | <b>157</b> Elementary youth improved reading skills  |
| • <b>Leadership Development</b> | <b>170</b> Youth improved their leadership skills  |
| • <b>Golf Programs</b>          | <b>76</b> Youth learned to play golf   |
| • <b>Career Development</b>     | <b>26</b> Youth toured local colleges and businesses   |
| • <b>Cultural Awareness</b>     | <b>106</b> Youth increased their awareness and appreciation for Louisville's diverse cultures  |
| • <b>Academic Achievement</b>   | <b>16</b> Youth are attending college<br><b>11</b> Youth graduated high school with college scholarships ranging from <b>\$1,200 to \$40,000</b> |

# OTHER SERVICES WE PROVIDE

## Lift Every Voice Diabetes Education Program

This program aims to increase awareness of diabetes in the African-American Community by educating and empowering the people so that the incidence and complications from this disease might be reduced.

## RESULTS

### HEALTH AWARENESS

#### Diabetes Educational Seminars

- **210** Individuals were empowered with Diabetes management and prevention education
- **125** Individuals received monthly blood pressure and blood sugar tests

#### Diabetes Community Exhibits

- **3,872** received Diabetes management literature

## Volunteer Income Tax Assistance (VITA)

The Louisville Urban League Guild, in partnership with the National Association of Black Accountants, helped 406 families in Louisville file their taxes electronically, and in most cases, to receive substantial refunds due them. In Fiscal 2004 the League's VITA program served more families and filed more tax returns than any previous year.

## RESULTS

### INCOME TAX ASSISTANCE

#### Tax Returns

- **406** Returns prepared

#### Federal

- Families received **\$988** average federal tax refunds
- Community benefited from **\$401,044** in federal tax refunds

#### Earned Income Tax Credits

- Families received **\$450** average Earned Income tax credits

## Community Winterhelp

As the financial manager for Community Winterhelp, the Louisville Urban League works with 22 local ministries to provide financial assistance to help hundreds of families pay their winter heating bills and avoid a possible loss of service. Funding for the program is provided by donations from Louisville Gas & Electric customers and a match from LG&E.

## RESULTS

### HEATING ASSISTANCE

- **1,739** Families assisted
- **\$243,000** Utility assistance provided
- **\$140** Average assistance per family

## Campaign for African-American Achievement

The target populations of this National Urban League initiative are youth who reside in Park Duvalle, Russell, Algonquin, California, Park Hill, Parkland, Phoenix Hill, Portland, Shelby Park and Smoketown. Through the CAAA, the youth department is able to groom and prepare youth for the challenges that lie before them.

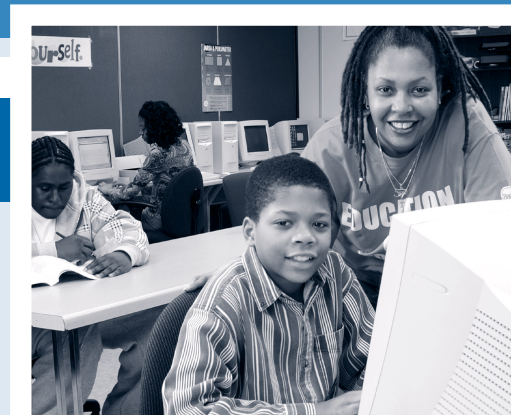
## RESULTS

- Hosted Education summit to help inform and engage community around Every 1 Reads initiative
- Worked with community leaders to design initiatives to increase youth achievement
- Distributed reading information and materials to increase early childhood reading comprehension



## YOUTH EXPO

- **1,500** Youth and parents linked to **50** local youth service providers
- **6** Youth won cash prizes from **\$75 - \$250** in an Oratorical Contest
- Over **100** youth were chosen as achievers by local community youth provider organizations and publicly recognized
- **92** Youth were inducted into the National Achiever's Society for academic achievement empowering the community



Louisville Urban League  
**Statement of Financial Position**  
 June 30, 2004 and June 30, 2003

Assets	6/30/04	6/30/03
Cash and Cash Equivalents	\$ 748,378	577,533
Investments	50,000	50,000
Accounts Receivable	488,295	478,899
Mortgage Receivable	371,680	371,680
Pledges Receivable	125,500	266,500
Assets Related to Building & Equipment	1,101,613	989,832
Prepaid Expenses	1,320	1,320
<b>Total Assets</b>	<b>2,886,786</b>	<b>2,735,764</b>
<b>Liabilities and Net Assets</b>		
Accounts Payable & Accrued Expenses	176,149	178,321
Defined Benefit Plan Payable	114,536	94,333
Mortgage Payable	245,232	0
<b>Total Liabilities</b>	<b>535,917</b>	<b>272,654</b>
<b>Net Assets</b>		
Unrestricted	1,587,303	1,532,351
Temporarily Restricted	763,566	930,759
Permanently Restricted		
<b>Total Net Assets</b>	<b>2,350,869</b>	<b>2,463,110</b>
<b>Total Liabilities &amp; Net Assets</b>	<b>\$ 2,886,786</b>	<b>2,735,764</b>

Revenue by Source	\$	3,582,416
Federal Government	2,008,206	56.1%
State Government	13,500	0.4%
Local Government	190,886	5.3%
Jeff. Co. Public Schools	156,150	4.4%
Foundations	219,888	6.1%
Metro United Way	430,792	12.0%
Contributions	318,105	8.9%
Other	244,889	6.8%

Expense by Program Area	\$	3,650,420
Employment Services Programs	2,307,322	63.2%
Youth Education & Development	545,580	14.9%
Housing Services	326,701	9.0%
Advocacy	79,457	2.2%
Management & General	391,360	10.7%

## CORPORATE MEMBERS & SUPPORTERS 2004

### \$15,000+

Brown & Williamson Tobacco Corporation  
 Brown-Forman Corporation  
 C.E. and S. Foundation  
 Fifth Third Bank, Ky.  
 Gheens Foundations  
 Humana Foundation  
 Jefferson County Public Schools  
 Jewish Hospital Healthcare Services  
 Kentuckianetworks  
 Kentucky Housing Corporation  
 Louisville Metro Government  
 National Urban League  
 J & L Foundation  
 PGA of America  
 Republic Bank & Trust  
 State Farm  
 Toyota Motor Manufacturing, USA, Inc.

### \$10,000 - \$14,999

Almost Family  
 Anthem Blue Cross Blue Shield  
 Borden Chemical  
 General Electric Appliances  
 Kentucky Commission on Human Rights  
 LG&E Energy Corporation  
 National City Bank, Ky.

Norton Healthcare  
 Thomas, Dr. Joan E. & Lee B.  
 Transit Authority of River City  
 Tumbleweed, Inc.  
 University of Louisville Hospital  
 Yum Brands, Inc.

### \$5,000 - \$9,999

American Synthetic Rubber Co. LLC  
 BellSouth Telecommunications  
 Churchill Downs, Inc.  
 The Courier-Journal  
 Davis, Lee Wilton & Beth  
 Dixie Properties  
 Enterprise Rent-A-Car Co. of Ky.  
 Fannie Mae  
 Ford Motor Company  
 The Kroger Company  
 Metropolitan Sewer District  
 Papa John's International, Inc.  
 United Parcel Service  
 US Bank

### \$1,000 - \$4,999

Abel Construction Co., Inc.  
 Allstate Insurance Company  
 Atlas Machine & Supply  
 Bank One Foundation  
 Baptist Hospital East  
 BB&T  
 Bellarmine University

Billy Goat Strut Publishing Co.  
 Bosse Mattingly Contractors, Inc.  
 Brown, II, Mr. & Mrs. Owsley  
 Citi Group  
 Doe Anderson  
 Dupont  
 First Baptist Church of Jefferson  
 Jefferson  
 First Capital Bank of KY  
 G.C. Williams Funeral Home  
 GE Employee Community Fund  
 Greater Louisville Convention & Visitors Bureau  
 HCA, National Patient Acct Svcs KY  
 Henry Vogt Foundation Inc.  
 Housing Authority of Louisville  
 The Housing Partnership, Inc.  
 Insight Communications  
 Irwin Union Bank  
 Kentucky Lottery Corporation  
 Klein Family Foundation  
 Louisville Bedding Co.  
 Louisville Metro Human Relations Commission  
 Louisville Water Company  
 Lowe's Company, Inc.  
 Lyles Enterprises  
 Manna, Inc.  
 Mercer Human Resources Consulting  
 National Tobacco Company  
 New West, LLC

Old National Bank  
 QK4  
 Robert Bosch Tool Corp.  
 Rohm and Haas KY, Inc.  
 Sears  
 SHPS, Inc.  
 Spatial Data Integrations, Inc.  
 Starks & Associates Insurance Agency  
 Stites & Harbison  
 Stock Yards Bank & Trust Co.  
 T & VA, Inc.  
 Thomas Industries  
 Trover Solutions, Inc.  
 University of Louisville  
 Zoeller Company

### Contributors

Advance Ready Mix Concrete, Inc.  
 AEGON Institutional Markets, Inc.  
 Anheuser-Busch, Inc.  
 Appriss Inc.  
 Arrow Electric Co., Inc.  
 Baptized Pentecostal Church of Holiness  
 Bayer Pharmaceuticals  
 Burnett Ave. Baptist Church  
 Burns Machinery Moving & Installation, Inc.  
 C W Johnson Xpress, LLC  
 Camp Dresser & McKee, Inc (CDM)

Center For Women & Families  
 Chilton & Medley PLC  
 Coca-Cola Bottling Co.  
 Commonwealth Bank & Trust  
 Dahlem Company, Inc.  
 Danner Company  
 Deloitte & Touche USA LLP  
 Domino's Pizza  
 Different Strokes Golf Centers, LLC  
 Eastern Star Baptist Church  
 Education Management Corp.  
 Greater Louisville, Inc.  
 Greenebaum Doll & McDonald, PLLC  
 GRW Engineers  
 Hall Contracting of Kentucky, Inc.  
 HYATT Regency  
 Icon Properties  
 Jack & Jill of America, Inc.  
 Jeffersontown Chamber of Commerce  
 Jeffersontown, City of  
 Kentuckiana Minority Business Council  
 Kentucky Derby Festival, Inc.  
 Kentucky Industry Liaison Group  
 Laidlaw Transit Services, Inc.  
 Louisville Endocrinology  
 Lusk Mechanical Contractors, Inc.  
 Mid-Kentucky Presbytery  
 Nugent Sand Company  
 Paradigm

Parsons Brinckerhoff Group Admin., Inc.  
 Plymouth Community Center  
 Radio Sound Inc.  
 Rangaswamy & Associates  
 Schuchard, Inc.  
 Sentry Construction Inc.  
 Shawnee Golf Course  
 Sullivan University  
 T.J. Maxx  
 T.E.M. Electric Co. Inc.  
 Tetra Tech PDR Engineers, Inc.  
 Tyson Foods, Inc.  
 Valhalla Golf Club, Inc.  
 Waterfront Development Corp  
 Watson Memorial Baptist Church  
 WAVE 3  
 WDRB-TV Fox 41  
 Westwood Presbyterian Church  
 WHAS 11  
 Zeon Chemicals, USA, Inc.

### CEO Society

Gaunt, James R. & Catherine M.  
 Hale, H. David  
 Howell, Thomas B.

## LOUISVILLE URBAN LEAGUE GUILD

For more than 50 years, the Louisville Urban League Guild, the agency's official volunteer auxiliary, has been educating people about the agency's activities and programs. Its 60-plus members identify areas of concern and assist the Urban League in fund development, program implementation and community relations.



**Caples, Elizabeth**  
President

**Van Vooren, Patty**  
1st Vice President, Program Chair

**Carson, Sheila**  
2nd Vice President, Membership Chair

**Smith, Nannette**  
Recording Secretary

**Payne, Judy**  
Corresponding Secretary,  
Hospitality Chair

**Pumphrey, Martha**  
Treasurer

**Blye, Atty. Cecil**  
Parliamentarian

**Weir, Ted**  
Member-at-Large

**Brown, Nancy**  
Member-at-Large

## LOUISVILLE URBAN LEAGUE YOUNG PROFESSIONALS

Louisville Urban League Young Professionals is an affiliate of the National Urban League and an auxiliary of the Louisville Urban League. The organization is made up of more than 80 predominantly African American professionals between the ages of 21 and 40, representing a variety of professions, including education, healthcare, marketing and law.



**Anthony, Vincel, Sr.**  
President

**Yeager, Michelle**  
Secretary

**Coleman, Steven, Jr.**  
Treasurer

**Blincoe, Terri**  
Vice President of Marketing/PR

**Coleman, Maurice**  
Vice President of Development

**Shanklin, Sherlene**  
Vice President of Membership

## MEMBERS & SUPPORTERS

### INDIVIDUALS & FAMILIES

Akrong, Edwin  
Anthony, Vincel & Nichelle\*\*  
Archer, Dwain E.\*  
Arnold, Thaddeus L.\*\*  
Atchley, Bobby J.\*  
Bailey, II, Irving W.  
Barbour, Eloyce\*  
Barker, J. Barry  
Beasley, Audra\*  
Beasley, Audrey T.\*  
Benson, Doris D.\*\*  
Bibby, Douglas J.\*\*  
Bingham, Edith S.  
Black, Leon, Jr.\*\*  
Blincoe, Terri E.\*\*  
Blye, Sr., Atty., Cecil A.\*  
Bomar, Pearl B  
Bonds, Jr., William L.\*\*  
Bowman, G. Sean\*\*  
Brady, Rebecca\*\*  
Bridgeman, Justin\*\*  
Brooks, Richard\*\*  
Brown, Wilda W.\*  
Buckner, Jason C.\*\*  
Buckner, Ravi\*\*  
Bullitt, Nola Howell\*\*  
Buntton, Kimberly L.\*\*  
Cahoon, Verna\*  
Calloway, Hazel\*\*  
Cannon, Tonita\*\*  
Caples, Elizabeth\*  
Carson, Sheila E.\*  
Carswell, Elnora\*  
Carter, Jeffrey  
Chapman, W. Barry & Rita M.  
Chichester, Angel L.\*\*  
Clemons, Thelma J.\*  
Coleman, Stephen V.\*\*  
Commons, Sandra J.\*  
Conway, Chamley  
Covington, Monice J.\*\*  
Crenshaw, Allie L.  
Cunagin, Teresa S.  
Curry, Luke\*\*  
Davis, Santana Unique\*\*  
Dryden, Jr., Gary W.\*\*  
Duck, Bridgette\*\*  
Dunn, Holly K.\*\*  
Eberhardt, Barbara\*  
Eskridge, Jr., George\*\*  
Farmer, Jr., Edgar T.  
Flowers, Monica\*\*  
Galbreath, Scott\*\*  
Gardner, Shawn\*\*  
Getman, Thomas E. & Susan S.,  
& Family  
Geurin, Claudia S.\*  
Givens, Melanie A.\*\*  
Granady, Juanita H.\*  
Gray-Knox, Bessie\*\*  
Greene, Marilyn M.\*\*  
Gummer, Rhonda D.\*\*  
Hale, H. David

Hale, David J. & Family  
Haley, DeWane LaMont\*\*  
Hancock, Chip & Family  
Hawkins, Robin M.\*\*  
Hawkins, Eric J.\*\*  
Haynes, Jennifer  
Hill, Rev. Dartanya G.  
Howell, Douglas H.  
Hyland, Wendy\*\*  
Israel, Jonathan\*\*  
Johnson, Sherrie L.\*\*  
Jones, Monica M.\*\*  
Klein, David  
Kokai, Tom  
Kyles, Dana L.\*\*  
Laird, Hannah B.\*  
Ledford, ED.D., Dr. Sandra A.  
Lee, Felicia L.  
Lewis, Tawanda\*\*  
Mahin, Mary B.\*  
McClain, Michael W.\*\*  
McDonald-Hackett, Angie\*\*  
McGruder, Anita  
McGruder-George, Maxine  
Miller, Jr., Paul A.  
Miller, Cassandra\*\*  
Miller-Cooper, Carolyn\*\*  
Mitchell, Mark D. & Angela L.\*\*  
Moran, Rochelle L.\*\*  
Moses, Dr. Alex J.  
Moss, Valerie K.\*\*  
Mucker, Jr., Larry\*\*  
Ogburn, Lisa C.\*\*  
Page, Lawanda\*\*  
Palm, Anthony\*\*  
Payne, Jr., Woodrow\*  
Payne, Eunice Inez\*  
Payne, Janell M.\*\*  
Perkins, Geneva\*  
Ponder, Ramon\*\*  
Posey, Christopher\*\*  
Pumphrey, Martha S.\*  
Rafferty, Hollye  
Ray, Mi'chelle A.\*\*  
Redd, Joyce\*  
Reddick, Dr. Brandi\*\*  
Reynolds, Sadiqa N.\*\*  
Reynolds, Keith\*\*  
Robbins, Jeffrey  
Roberts, Ransford\*\*  
Roberts, Johnetta\*\*  
Rogester, Clara\*  
Romaine, Khris K.\*\*  
Rowe, Jr., Gordon\*\*  
Rowe, Tabatha Tyler\*\*  
Runyon, Edgar Trey\*\*  
Scott, Sharon K.  
Shane, Drew\*\*  
Shanklin, Sherlene M.\*\*  
Shiple, Deathra L.\*  
Shiple, Virginia L.\*  
Shoulders, Ivy D.\*\*  
Siemens, Jr., George R.  
Smith, Nannette\*  
Spears, Emma L.\*  
Starks, Cornell

Stone, Karen\*\*  
Stringer, David C.\*  
Taylor-Archer, Dr. Mordean\*  
Tolbert, Breshia  
Trabue, Vivian\*  
Turley, Teresa  
Tyler, Lynn S.\*  
Usher, Kareem\*\*  
Van Vooren, Patty M.\*  
Wallace, Ph.D., Dr. Sherri Leronda\*  
Watkins, Kadeem A.  
Watson, Lela Randle\*  
Watson, Kellie R.\*\*  
Wigginton, Kevin\*\*  
Williams, Linda E. C.\*\*  
Williams, Kyala N.\*\*  
Willingham, Lee\*\*  
Wilson, Jean  
Wright, Jerry\*  
Yates, James B. & Marilyn L.  
Yeager, Michelle D.\*\*  
Zoeller, Robert F. & Clara W.

\* LUL Guild Member  
\*\* LUL Young Professional Member

### LIFE MEMBERS

100 Black Men of Louisville, Inc.  
Allstate Foundation  
Alpha Kappa Alpha Sorority, Inc.  
Anderson, David L., Jr.  
Bass, Lewis  
Beeler, Arthur & Mary  
Brown & Williamson Tobacco Corporation  
Burse, Raymond & Kim  
Business First of Louisville  
Cannon, Harry  
Carpenter, Evander  
Carter, Florence  
Central District Baptist Association  
Chickasaw Federation, Inc.  
Clark, David R.  
Claybrooks, Pearl  
Cobb, Douglas F.  
Conwell, Roger, Jr.  
Crenshaw, Jasper  
Crumes, Fred & Rosa  
Dale, Archie  
Dale, LaDean F.  
Dillard, Arthur E., Jr.  
Dougherty, Herbert M.  
Dunlap, Kevin L.  
Epicurette Club  
Eugene, Georgia R.  
First Baptist Church of Jeffersontown  
Foree, LaDean H.  
Forest Tabernacle Baptist Church  
Frazier, Arthur E., Jr.  
Gaut, James R. & Catherine M.  
Goins, Sr., Edgar S.  
Green, Nathaniel E.  
Griffin, R. James  
Henderson, Charles A.  
Hutchins, Walter W.  
Jasmin, Ernest A., Sr.  
Joan and Lee Thomas Foundation  
Johnson, Helen A.  
Johnson, Leon  
Johnson, Tom & Maxie  
Jones, PH.D. Sylvester Singleton & Yvone V.  
Joseph E. Seagram & Sons, Inc.  
Kentucky Rendezvous, Inc.,  
Kroger Company  
Ky. Air National Guard  
Lee, Alfred & Regina Moore  
Lincoln Foundation  
Lincoln Institute (Louisville Alumni Chapter)  
Livingston, Leroy  
Llewellyn, John J.  
Louisville Moles, Inc.  
Love, Eleanor Young  
Love, Laura Young  
Lyons, Augusta Wallace  
Manassah, Edward  
Mason, Howard G.  
Mayfield, LeNaye Brown  
McDonald, Larry M.  
McHenry, Beatrice H.  
Moore, Malvin E., Jr.  
Morris, Ralph C., M.D.  
New Zion Baptist Church  
Omega Psi Phi Fraternity  
Owens, Darryl T.  
Owsley, Jessie Beatrice  
Owsley, Paul C.  
Philip Morris, U.S.A.  
Porter, Marie E.  
Reynerson, Marc & Freda  
Rhodes, Dorothy  
Richmond, Benjamin K.  
Rivers, Clarence W.  
Robinson, Dr. & Mrs. Samuel  
Sawyer, Vivian Ruth  
Schmitt & Family, Karl & Melinda  
Shelton, Ronald J.  
Shumaker, John W.  
Simpson, Frank B.  
Spalding, Steven & Leslie  
Strange, Gail  
Sunset Avenue Neighborhood Improvement Club  
The Originals  
Toler, Herbert & Annette  
Trice, Charles, Sr.  
Tytus, Walter L.  
Valdez, Louis, Jr.  
Valhalla Golf Club, Inc.  
Von Spiegel Baptist Church  
Wainwright, Sandra  
Walters, Arthur M. (Founder-Life Members)  
Walters, Arthurine M.  
West Chestnut Street Baptist Church  
Williams, Aubrey  
Williams, John R. & Mary A.  
Willis, Cora L.  
Wilson, Marion E.

Winn-Dixie Midwest  
WLKY-TV Channel 32  
Wood & Family, Stephen R. & Mona  
Young, Joyce Howell, M.D.  
Young, Waltraud S.  
Young, III, C. Milton, M.D.  
Zewde, Elias  
Zink, Stephen F.

### SUBSCRIBING LIFE MEMBERS

Alexander, Charles, Jr.  
Alpha Building Maint. Services, Inc.  
Anthony, Marie  
Barnett, Michelle W.  
Barnett, William  
Bather, Paul  
Bell, Robert L., Sr. Esq.  
Bradshaw, Lora  
Brown, J. Alphonso  
Brown, James Norman  
Campbell, Robert E., Jr.  
Carter, Janice  
Gholston, Roosevelt & Gloria, Jr.  
Hatcher, E. Porter, Jr.  
Hatcher, Roosevelt, Jr.  
Hicks, Madelin Maupin, D.D.S.  
Jones, Sandra  
Jones, Ulysses W.  
Kean, William A., Jr.  
Kuhn, Terry L.  
Maupin-Hicks, Madeline, D.M.D.  
Merriveather, Freda  
Moses, Alex  
Parker, Karl A.  
Remson, Anthony, M.D.  
Reynolds, William & Mary  
Sanderson, Camille  
Sanderson, Leonard V.  
Smith, William E.  
Stephenson, Carolyn L.  
Stone, Estrelita P.  
Summers, William E., V  
Traylor, Mary Rose  
Turner, Orlando M.  
Wade, Michael F.  
White, Doris M.  
Williams, Sharon K.  
Willingham, Gwenda L.  
Willis, Cora Laine  
Wisdom, Lawrence



Metro United Way  
Member Agency



Louisville Urban League • 1535 West Broadway • Louisville, Kentucky 40203 • (502) 561-6830 • Visit us on the Web at: [www.lul.org](http://www.lul.org)



National Urban  
League Affiliate